

# Stainless Steel Vertical Multistage Pump

# SVM(T)12

## Applications

- Water supply
- Industry pressure boosting
- Industry liquid transfer
- Water treatment
- Irrigation

## Motor

- Fitted with a totally enclosed fan-cooled, 2-pole motor
- Enclosure class: IP55
- Insulation class: F
- Supply voltage: 50Hz or 60Hz

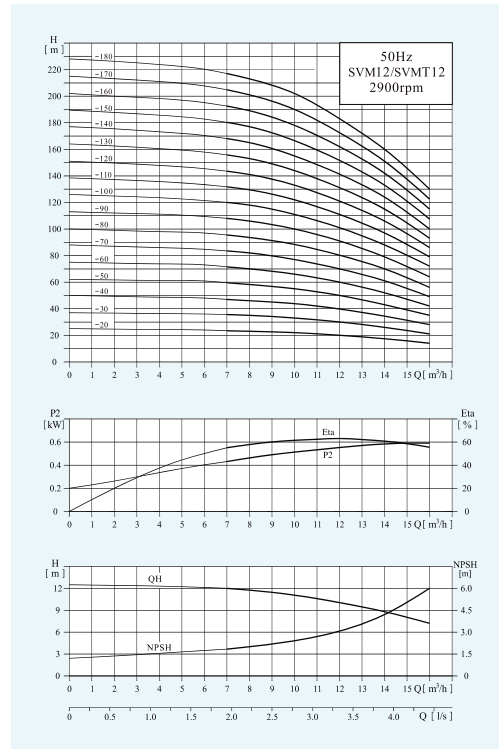
## Operation conditions

- Thin, clean, non-explosive liquids, not containing solid particles or fibers liquid
- Liquid temperature: normal temperature type: -15°C~+70°C hot water type: -15°C~+105°C
- Ambient temperature: maximum +40°C
- Altitude: maximum 1000m

## Material

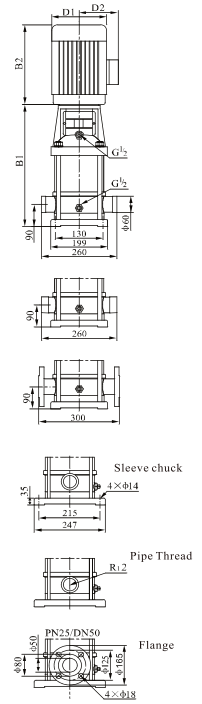
- Inlet&outlet chamber: Cast iron/Stainless steel(304/316)
- Impeller: Stainless steel(304/316)
- Shell: Stainless steel(304/316)
- Shaft: Stainless steel(304/316)
- Coupling: Ductile iron
- Bearing: Tungsten carbide
- Mechanical seal: Tungsten carbide/Graphite

## Performance Curves



## Performance Table

Model	Associated motor(kw)	Q (m³/h)	H (m)												
			7	8	9	10	11	12	13	14	15	16			
SVM12-20	1.5	23.5	23	22.5	22	21	20	18.5	17	15.5	14				
SVM12-30	2.2	35.5	35	34	33	31.5	30	28	26	23.5	21				
SVM12-40	3	47	46	45	44	42	40	37	34	31	28				
SVM12-50	3	59.5	58	56.5	55	52.5	50	46.5	43	39	35				
SVM12-60	4	71.5	70	68	66	63	60	56	52	47	42				
SVM12-70	5.5	83.5	82	79.5	77	73.5	70	65.5	61	55	49				
SVM12-80	5.5	95.5	94	91	88	84	80	75	70	63	56				
SVM12-90	5.5	108	106	103	100	95.5	91	85	79	71.5	64				
SVM12-100	7.5	120	118	114.5	111	106	101	94.5	88	80	72				
SVM12-120	7.5	143.5	141	137	133	127	121	113.5	106	96	86				
SVM12-140	9.2	168	165	160	155	148	141	132.5	124	112	100				
SVM12-160	11	192.5	189	183.5	178	170	162	152	142	128.5	115				
SVM12-180	11	217	213	207.5	202	192.5	183	171.5	160	145	130				



## Dimension & Weight

Model	Size (mm)					Net Weight (kg)
	B1	B2	B1+B2	D1	D2	
SVM12-20	367	290	657	190	155	39
SVM12-30	397	290	687	190	155	43
SVM12-40	437	345	782	197	165	51
SVM12-50	467	345	812	197	165	53
SVM12-60	497	355	852	230	188	61
SVM12-70	547	390	937	260	208	73
SVM12-80	577	390	967	260	208	74
SVM12-90	607	390	997	260	208	76
SVM12-100	637	390	1027	260	208	83
SVM12-120	697	390	1087	260	208	87
SVM12-140	757	390	1147	260	208	108
SVM12-160	905	500	1405	330	255	161
SVM12-180	965	500	1465	330	255	164