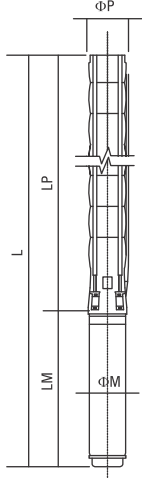


# Teknik Özellikler

## Technical specifications



<b>Difüzör</b> Diffuser	: Paslanmaz çelik (AISI 304L) : Stainless steel (AISI 304L)
<b>Çark</b> Impeller	: Paslanmaz çelik (AISI 304L) : Stainless steel (AISI 304L)
<b>Pompa mili</b> Pump shaft	: Paslanmaz çelik (AISI 420) : Stainless steel (AISI 420)
<b>Kaplin</b> Coupling	: Paslanmaz çelik (AISI 420) : Stainless steel (AISI 420)
<b>Süzgeç</b> Strainer	: Paslanmaz çelik (AISI 304) : Stainless steel (AISI 304)
<b>Çıkış haznesi bağlantısı</b> Outlet connection diameter	: 3" (içten pasolu) : 3" (inside threaded)

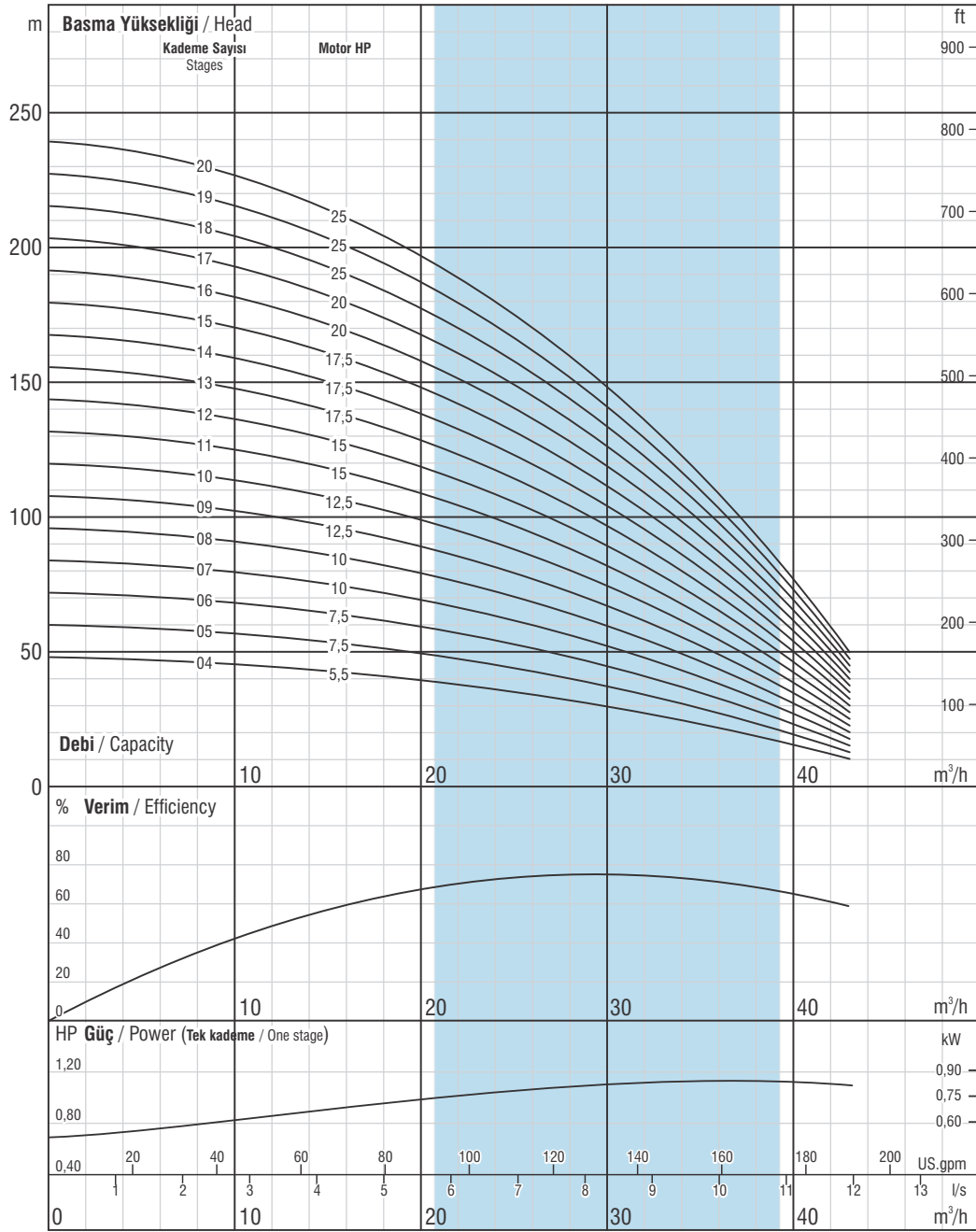
<b>Max. kum miktarı</b> Max. sand content	: 50 gr / m <sup>3</sup> : 50 gr / m <sup>3</sup>
<b>Klepe</b> Valve cap	: Paslanmaz çelik : Stainless steel
<b>Maksimum gerilim değişimi</b> Voltage	: 380-415 V (+%6 / -%10) : 380-415 V (+%6 / -%10)
<b>Frekans</b> Frequency	: 50 Hz. : 50 Hz.
<b>Maksimum su sıcaklığı</b> Max. water temperature	: 30°C (50°C opsiyonel) : 30°C (50°C optional)
<b>Koruma sınıfı</b> Degree of protection	: IP 68 : IP 68



Opsiyonel malzemeler için lütfen irtibata geçiniz.  
Please contact us for optional materials.

Pompa Tipi Pump type	Kad. Sayısı Stages	Motor		Ölçüler / Dimensions (mm)					Ağırlık / Weight (kg)		
		kW	HP	L	LM	LP	ΦM	ΦP	Motor Motor	Pompa Pump	Toplam Total
VSP SS 06030/04	4	4	5,5	1298	649	649	142	132	40	13	53
VSP SS 06030/05	5	5,5	7,5	1422	678	744	142	132	43,5	15	58,5
VSP SS 06030/06	6	5,5	7,5	1517	678	839	142	132	43,5	17	60,5
VSP SS 06030/07	7	7,5	10	1692	758	934	142	132	50	19	69
VSP SS 06030/08	8	7,5	10	1787	758	1029	142	132	50	21	71
VSP SS 06030/09	9	9,3	12,5	1924	800	1124	142	132	55	23	78
VSP SS 06030/10	10	9,3	12,5	2019	800	1219	142	132	55	25	80
VSP SS 06030/11	11	9,3	12,5	2114	800	1314	142	132	55	27	82
VSP SS 06030/12	12	11	15	2260	851	1409	142	132	60	29	89
VSP SS 06030/13	13	11	15	2355	851	1504	142	132	60	31	91
VSP SS 06030/14	14	13	17,5	2510	911	1599	142	132	65	33	98
VSP SS 06030/15	15	13	17,5	2605	911	1694	142	132	65	36	101
VSP SS 06030/16	16	15	20	2762	973	1789	142	132	72	38	110
VSP SS 06030/17	17	15	20	2857	973	1884	142	132	72	40	112
VSP SS 06030/18	18	18,5	25	2985	1006	1979	142	132	76	42	118
VSP SS 06030/19	19	18,5	25	3080	1006	2074	142	132	76	44	120
VSP SS 06030/20	20	18,5	25	3175	1006	2169	142	132	76	46	122

Pompa Tipi Pump type	Kad. Sayısı Stages	Motor		Akım Current (A)	m <sup>3</sup> /h l/s	0	7,2	14,4	21,6	28,8	36	43,2
		kW	HP			0	2	4	6	8	10	12
VSP SS 06030/04	4	4	5,5	10,2	Basma Yüksekliği / Head (m)	48	46	43	38	31	22	10
VSP SS 06030/05	5	5,5	7,5	13,3		60	58	54	47	39	27	12
VSP SS 06030/06	6	5,5	7,5	13,3		72	69	64	57	46	33	15
VSP SS 06030/07	7	7,5	10	17,2		84	81	75	66	54	38	17
VSP SS 06030/08	8	7,5	10	17,2		96	92	86	76	62	44	20
VSP SS 06030/09	9	9,3	12,5	20,8		108	104	97	85	70	49	22
VSP SS 06030/10	10	9,3	12,5	20,8		119	116	107	95	77	54	25
VSP SS 06030/11	11	9,3	12,5	20,8		131	127	118	104	85	60	27
VSP SS 06030/12	12	11	15	23,7		143	139	129	113	93	65	30
VSP SS 06030/13	13	11	15	23,7		155	150	139	123	100	71	32
VSP SS 06030/14	14	13	17,5	28,7		167	162	150	132	108	76	35
VSP SS 06030/15	15	13	17,5	28,7		179	173	161	142	116	82	37
VSP SS 06030/16	16	15	20	33,1		191	185	172	151	124	87	40
VSP SS 06030/17	17	15	20	33,1		203	196	182	161	131	93	42
VSP SS 06030/18	18	18,5	25	41,8		215	208	193	170	139	98	45
VSP SS 06030/19	19	18,5	25	41,8		227	220	204	180	147	103	47
VSP SS 06030/20	20	18,5	25	41,8		239	231	214	189	155	109	50



Firmamız teknolojik gelişmeler nedeniyle değişiklik hakkını saklı tutar.

Due to continuous improvement in design we reserve the right to amend specifications or data without prior notice.

## (4 - 20 KADEME) VSP SS 06030

Çark kanat sayısı / No. of vanes  
7

Çıkış haznesi bağlantısı / Outlet connection diameter  
3" (içten pasolu) / 3" (inside threaded)

Pompa dış çapı / Pump outside diameter  
132 mm

Dönüş Yönü / Rotation  
Saatin tersi yönünde / CCW

Devir / Revolution  
2900 rpm

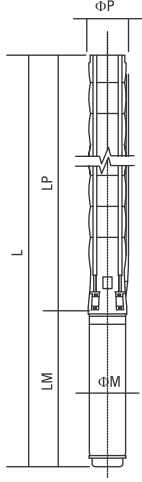
Mil çapı / Shaft diameter  
22 mm

Pompa performans eğrileri 1 bar atmosfer basıncı altında 15°C sıcaklığındaki, özgül yoğunluğu 1 gr/cm³ olan su ile elde edilmiştir.  
The hydraulic working characteristics have been taken with water at 15°C, at the atmospheric pressure of 1 bar and specific gravity is 1 gr/cm³



# Teknik Özellikler

## Technical specifications



<b>Difüzör</b> Diffuser	: Paslanmaz çelik (AISI 304L) : Stainless steel (AISI 304L)
<b>Çark</b> Impeller	: Paslanmaz çelik (AISI 304L) : Stainless steel (AISI 304L)
<b>Pompa mili</b> Pump shaft	: Paslanmaz çelik (AISI 420) : Stainless steel (AISI 420)
<b>Kaplin</b> Coupling	: Paslanmaz çelik (AISI 420) : Stainless steel (AISI 420)
<b>Süzgeç</b> Strainer	: Paslanmaz çelik (AISI 304) : Stainless steel (AISI 304)
<b>Çıkış haznesi bağlantısı</b> Outlet connection diameter	: 3" (içten pasolu) : 3" (inside threaded)

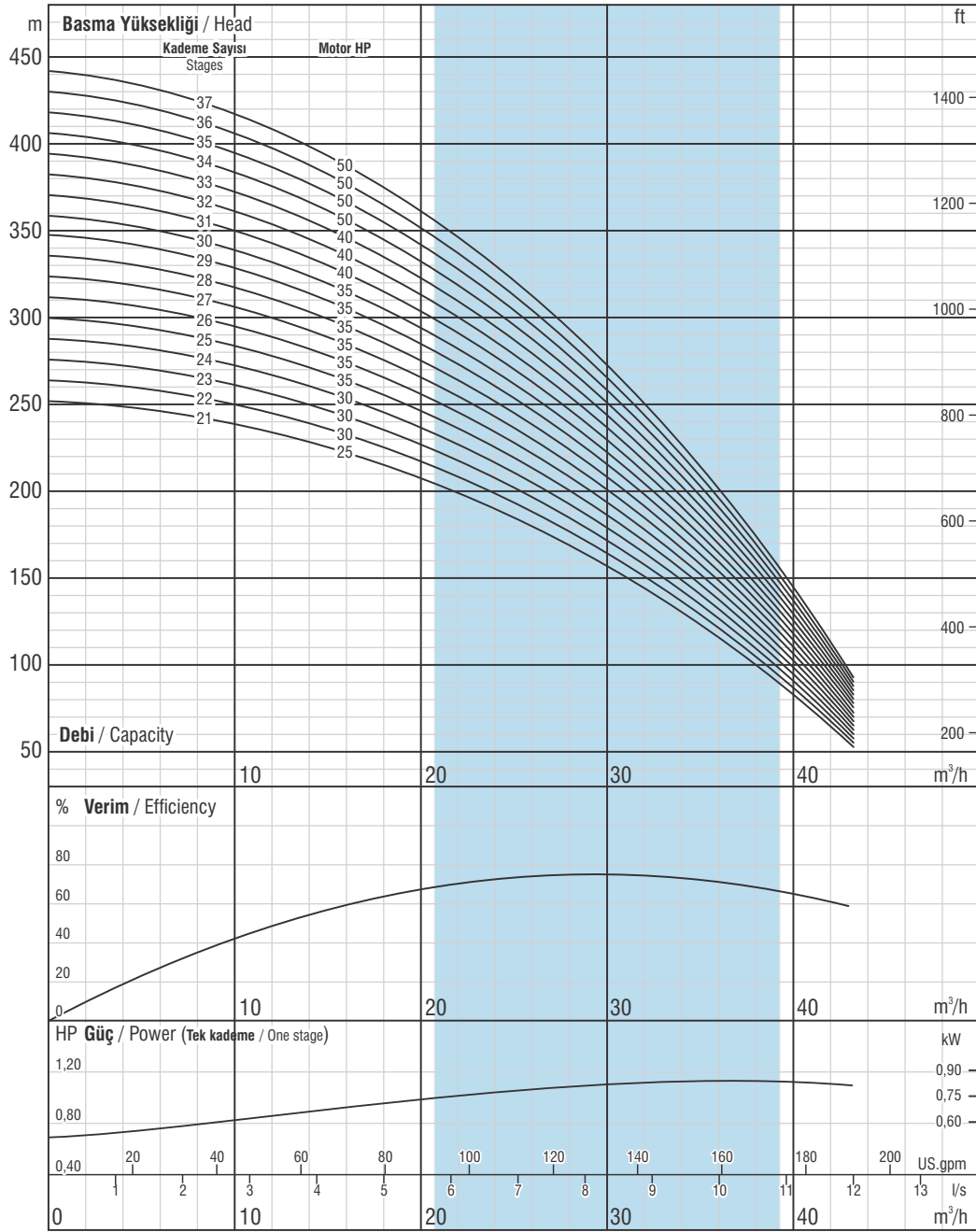
<b>Max. kum miktarı</b> Max. sand content	: 50 gr / m <sup>3</sup> : 50 gr / m <sup>3</sup>
<b>Klepe</b> Valve cap	: Paslanmaz çelik : Stainless steel
<b>Maksimum gerilim değişimi</b> Voltage	: 380-415 V (+%6 / -%10) : 380-415 V (+%6 / -%10)
<b>Frekans</b> Frequency	: 50 Hz. : 50 Hz.
<b>Maksimum su sıcaklığı</b> Max. water temperature	: 30°C (50°C opsiyonel) : 30°C (50°C optional)
<b>Koruma sınıfı</b> Degree of protection	: IP 68 : IP 68



Opsiyonel malzemeler için lütfen irtibata geçiniz.  
Please contact us for optional materials.

Pompa Tipi Pump type	Kad. Sayısı Stages	Motor		Ölçüler / Dimensions (mm)					Ağırlık / Weight (kg)		
		kW	HP	L	LM	LP	ΦM	ΦP	Motor Motor	Pompa Pump	Toplam Total
VSP SS 06030/21	21	18,5	25	3270	1006	2264	142	132	76	48	124
VSP SS 06030/22	22	22	30	3465/3249	1106/890	2359	142/172	132	87/86	50	137/136
VSP SS 06030/23	23	22	30	3560/3344	1106/890	2454	142/172	132	87/86	52	139/138
VSP SS 06030/24	24	22	30	3655/3439	1106/890	2549	142/172	132	87/86	54	141/140
VSP SS 06030/25	25	22	30	3750/3534	1106/890	2644	142/172	132	87/86	56	143/142
VSP SS 06030/26	26	22	30	3845/3629	1106/890	2739	142/172	132	87/86	58	145/144
VSP SS 06030/27	27	26,5	35	4051/3774	1217/940	2834	142/172	132	98/91	60	158/151
VSP SS 06030/28	28	26,5	35	4146/3869	1217/940	2929	142/172	132	98/91	63	161/154
VSP SS 06030/29	29	26,5	35	4241/3964	1217/940	3024	142/172	132	98/91	65	163/156
VSP SS 06030/30	30	26,5	35	4336/4059	1217/940	3119	142/172	132	98/91	67	165/158
VSP SS 06030/31	31	30	40	4461/4194/4270	1247/980/1056	3214	142/172/192	132	103/103/129	69	172/172/198
VSP SS 06030/32	32	30	40	4556/4289/4365	1247/980/1056	3309	142/172/192	132	103/103/129	71	174/174/200
VSP SS 06030/33	33	30	40	4651/4384/4460	1247/980/1056	3404	142/172/192	132	103/103/129	73	176/176/202
VSP SS 06030/34	34	30	40	4746/4479/4555	1247/980/1056	3499	142/172/192	132	103/103/129	75	178/178/204
VSP SS 06030/35	35	30	40	4841/4574/4650	1247/980/1056	3594	142/172/192	132	103/103/129	77	180/180/206
VSP SS 06030/36	36	30	40	4936/4669/4745	1247/980/1056	3689	142/172/192	132	103/103/129	79	182/182/208
VSP SS 06030/37	37	30	40	5031/4764/4840	1247/980/1056	3784	142/172/192	132	103/103/129	81	184/184/210

Pompa Tipi Pump type	Kad. Sayısı Stages	Motor		Akım Current (A)	m <sup>3</sup> /h l/s	0	7,2	14,4	21,6	28,8	36	43,2
		kW	HP			0	2	4	6	8	10	12
VSP SS 06030/21	21	18,5	25	41,8	Basma Yüksekliği / Head (m)	251	243	225	199	162	114	52
VSP SS 06030/22	22	22	30	48,5		263	254	236	208	170	120	54
VSP SS 06030/23	23	22	30	48,5		275	266	247	218	178	125	57
VSP SS 06030/24	24	22	30	48,5		287	277	257	227	185	131	59
VSP SS 06030/25	25	26,5	35	48,5		299	289	268	236	193	136	62
VSP SS 06030/26	26	26,5	35	48,5		311	301	279	246	201	142	64
VSP SS 06030/27	27	26,5	35	56,4		323	312	290	255	209	147	67
VSP SS 06030/28	28	26,5	35	56,4		334	324	300	265	216	152	69
VSP SS 06030/29	29	26,5	35	56,4		346	335	311	274	224	158	72
VSP SS 06030/30	30	26,5	35	56,4		358	347	322	284	232	163	74
VSP SS 06030/31	31	30	40	61,7		370	358	332	293	240	169	77
VSP SS 06030/32	32	30	40	61,7		382	370	343	303	247	174	79
VSP SS 06030/33	33	30	40	61,7		394	381	354	312	255	180	82
VSP SS 06030/34	34	37	50	61,7		406	393	365	322	263	185	84
VSP SS 06030/35	35	37	50	61,7		418	405	375	331	270	191	87
VSP SS 06030/36	36	37	50	61,7		430	416	386	340	278	196	89
VSP SS 06030/37	37	37	50	61,7		442	428	397	350	286	201	92



Firmamız teknolojik gelişmeler nedeniyle değişiklik hakkını saklı tutar.

Due to continuous improvement in design we reserve the right to amend specifications or data without prior notice.

## (21 - 37 KADEME) VSP SS 06030

21- 37 STAGES

Çark kanat sayısı / No. of vanes  
7

Çıkış haznesi bağlantısı / Outlet connection diameter  
3" (içten pasolu) / 3" (inside threaded)

Pompa dış çapı / Pump outside diameter  
132 mm

Dönüş Yönü / Rotation  
Saatin tersi yönünde / CCW

Devir / Revolution  
2900 rpm

Mil çapı / Shaft diameter  
22 mm

Pompa performans eğrileri 1 bar atmosfer basıncı altında 15°C sıcaklığındaki, özgül yoğunluğu 1 gr/cm<sup>3</sup> olan su ile elde edilmiştir.  
The hydraulic working characteristics have been taken with water at 15°C, at the atmospheric pressure of 1 bar and specific gravity is 1 gr/cm<sup>3</sup>

