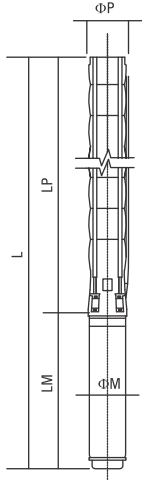


Teknik Özellikler

Technical specifications



Difüzör Diffuser	: Paslanmaz çelik (AISI 304L) : Stainless steel (AISI 304L)
Çark Impeller	: Paslanmaz çelik (AISI 304L) : Stainless steel (AISI 304L)
Pompa mili Pump shaft	: Paslanmaz çelik (AISI 420) : Stainless steel (AISI 420)
Kaplin Coupling	: Paslanmaz çelik (AISI 420) : Stainless steel (AISI 420)
Süzgeç Strainer	: Paslanmaz çelik (AISI 304) : Stainless steel (AISI 304)
Çıkış haznesi bağlantısı Outlet connection diameter	: 5" (içten pasolu) : 5" (inside threaded)

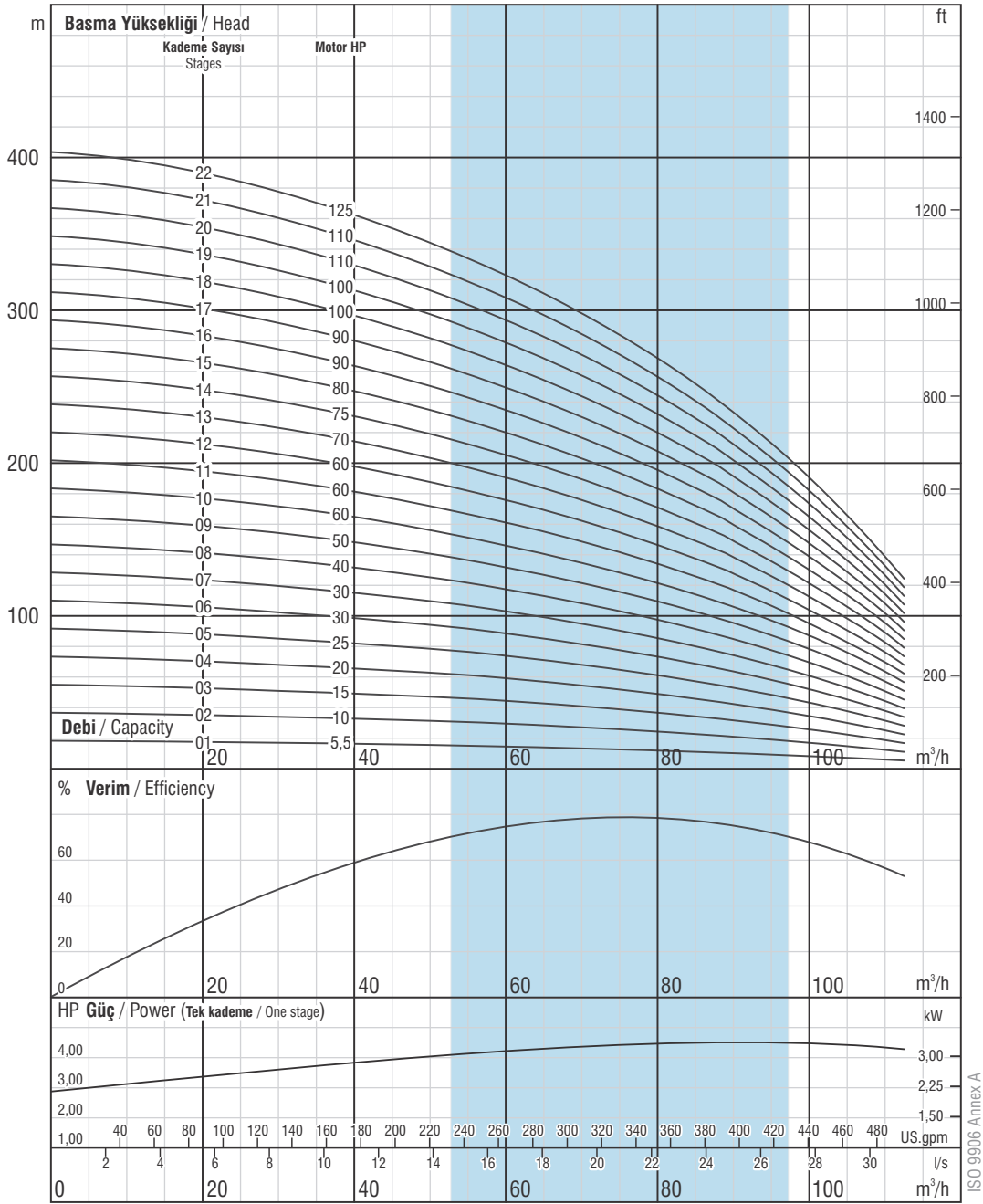
Max. kum miktarı Max. sand content	: 50 gr / m ³ : 50 gr / m ³
Klepe Valve cap	: Paslanmaz çelik : Stainless steel
Maksimum gerilim değişimi Voltage	: 380-415 V (+%6 / -%10) : 380-415 V (+%6 / -%10)
Frekans Frequency	: 50 Hz. : 50 Hz.
Maksimum su sıcaklığı Max. water temperature	: 30°C (50°C opsiyonel) : 30°C (50°C optional)
Koruma sınıfı Degree of protection	: IP 68 : IP 68



Opsiyonel malzemeler için lütfen irtibata geçiniz.
Please contact us for optional materials.

Pompa Tipi Pump type	Kad. Sayısı Stages	Motor		Ölçüler / Dimensions (mm)					Ağırlık / Weight (kg)		
		kW	HP	L	LM	LP	ΦM	ΦP	Motor Motor	Pompa Pump	Toplam Total
VSP SS 07075/01	1	4	5,5	1220	649	571	142	172	40	26	66
VSP SS 07075/02	2	7,5	10	1457	758	699	142	172	50	30	80
VSP SS 07075/03	3	11	15	1678	851	827	142	172	60	34	94
VSP SS 07075/04	4	15	20	1928	973	955	142	172	72	38	110
VSP SS 07075/05	5	18,5	25	2089	1006	1083	142	172	76	42	118
VSP SS 07075/06	6	22	30	2317/2101	1106/890	1211	142/172	172	87/86	46	133/132
VSP SS 07075/07	7	26,5	35	2556/2279	1217/940	1339	142/172	172	98/91	50	148/141
VSP SS 07075/08	8	30	40	2714/2447/2523	1247/980/1056	1467	142/172/192	172	103/103/129	54	157/157/183
VSP SS 07075/09	9	37	50	2942/2655/2711	1347/1060/1116	1595	142/172/192	172	110/113/138	58	168/171/196
VSP SS 07075/10	10	37	50	3070/2783/2839	1347/1060/1116	1723	142/172/192	172	110/113/138	62	172/175/200
VSP SS 07075/11	11	45	60	2990/3052	1139/1201	1851	172/192	172	127/152	66	193/218
VSP SS 07075/12	12	45	60	3118/3180	1139/1201	1979	172/192	172	127/152	70	197/222
VSP SS 07075/13	13	52	70	3325/3393	1218/1286	2107	172/192	172	138/170	74	212/244
VSP SS 07075/14	14	52	70	3453/3521	1218/1286	2235	172/192	172	138/170	78	216/248
VSP SS 07075/15	15	55	75	3613/3649	1250/1286	2363	172/192	172	138/170	82	220/252
VSP SS 07075/16	16	60	80	3832	1341	2491	192	172	185	86	271
VSP SS 07075/17	17	67	90	3985	1366	2619	192	172	186	89	275
VSP SS 07075/18	18	67	90	4113	1366	2747	192	172	186	93	279
VSP SS 07075/19	19	67	90	4241	1366	2875	192	172	186	97	283
VSP SS 07075/20	20	75	100	4394	1391	3003	192	172	195	101	296
VSP SS 07075/21	21	75	100	4522	1391	3131	192	172	195	105	300
VSP SS 07075/22	22	81	110	4730/4629	1471/1370	3259	192/231	172	210/256	109	319/365

Pompa Tipi Pump type	Kad. Sayısı Stages	Motor		Akım Current (A)	m ³ /h l/s	0	57,6	64,8	72	79,2	86,4	96
		kW	HP			0	16	18	20	22	24	26,7
VSP SS 07075/01	1	4	5,5	10,2	Basma Yüksekliği / Head (m)	19	15	15	14	13	11	9
VSP SS 07075/02	2	7,5	10	17,2		38	31	29	27	25	23	19
VSP SS 07075/03	3	11	15	23,7		58	46	44	41	38	34	28
VSP SS 07075/04	4	15	20	33,1		77	62	58	55	50	45	37
VSP SS 07075/05	5	18,5	25	41,8		96	77	73	68	63	57	47
VSP SS 07075/06	6	22	30	48,5		115	93	88	82	75	68	56
VSP SS 07075/07	7	26,5	35	56,4		135	108	102	96	88	79	66
VSP SS 07075/08	8	30	40	61,7		154	124	117	109	101	91	75
VSP SS 07075/09	9	37	50	74,3		173	139	132	123	113	102	84
VSP SS 07075/10	10	37	50	74,3		192	155	146	137	126	113	94
VSP SS 07075/11	11	45	60	90,4		211	170	161	150	138	125	103
VSP SS 07075/12	12	45	60	90,4		231	186	175	164	151	136	112
VSP SS 07075/13	13	52	70	103,3		250	201	190	178	164	147	122
VSP SS 07075/14	14	52	70	103,3		269	217	205	191	176	159	131
VSP SS 07075/15	15	55	75	110,5		288	232	219	205	189	170	140
VSP SS 07075/16	16	60	80	119,1		307	247	234	219	201	181	150
VSP SS 07075/17	17	67	90	134,6		327	263	249	232	214	193	159
VSP SS 07075/18	18	67	90	134,6		346	278	263	246	226	204	169
VSP SS 07075/19	19	67	90	134,6		365	294	278	260	239	215	178
VSP SS 07075/20	20	75	100	150,7		384	309	292	273	252	227	187
VSP SS 07075/21	21	75	100	150,7		404	325	307	287	264	238	197
VSP SS 07075/22	22	81	110	159		423	340	322	301	277	249	206



Firmamız teknolojik gelişmeler nedeniyle değişiklik hakkını saklı tutar.

Due to continuous improvement in design we reserve the right to amend specifications or data without prior notice.

(1 - 22 KADEME) VSP SS 07075

Çark kanat sayısı / No. of vanes
6

Çıkış haznesi bağlantısı / Outlet connection diameter
5" (içten pasolu) / 5" (inside threaded)

Pompa dış çapı / Pump outside diameter
172 mm

Dönüş Yönü / Rotation
Saatin tersi yönünde / CCW

Devir / Revolution
2900 rpm

Mil çapı / Shaft diameter
25,4 mm

Pompa performans eğrileri 1 bar atmosfer basıncı altında 15°C sıcaklığındaki, özgül yoğunluğu 1 gr/cm³ olan su ile elde edilmiştir.
The hydraulic working characteristics have been taken with water at 15°C, at the atmospheric pressure of 1 bar and specific gravity is 1 gr/cm³

