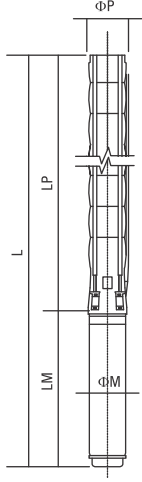


Teknik Özellikler

Technical specifications



Difüzör Diffuser	: Paslanmaz çelik (AISI 304L) : Stainless steel (AISI 304L)
Çark Impeller	: Paslanmaz çelik (AISI 304L) : Stainless steel (AISI 304L)
Pompa mili Pump shaft	: Paslanmaz çelik (AISI 420) : Stainless steel (AISI 420)
Kaplin Coupling	: Paslanmaz çelik (AISI 420) : Stainless steel (AISI 420)
Süzgeç Strainer	: Paslanmaz çelik (AISI 304) : Stainless steel (AISI 304)
Çıkış haznesi bağlantısı Outlet connection diameter	: 5" (içten pasolu) : 5" (inside threaded)

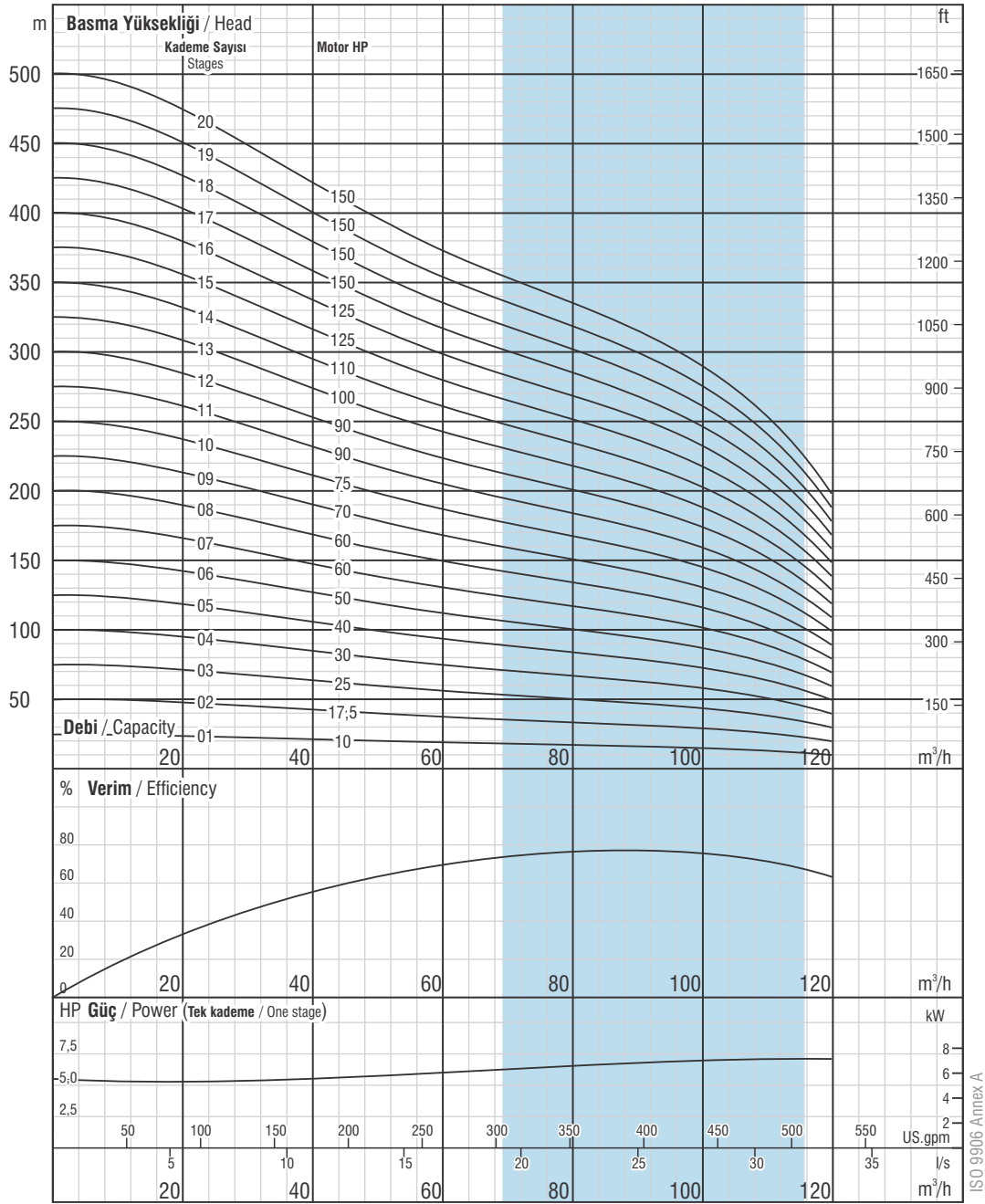
Max. kum miktarı Max. sand content	: 50 gr / m ³ : 50 gr / m ³
Klepe Valve cap	: Paslanmaz çelik : Stainless steel
Maksimum gerilim değişimi Voltage	: 380-415 V (+%6 / -%10) : 380-415 V (+%6 / -%10)
Frekans Frequency	: 50 Hz. : 50 Hz.
Maksimum su sıcaklığı Max. water temperature	: 30°C (50°C opsiyonel) : 30°C (50°C optional)
Koruma sınıfı Degree of protection	: IP 68 : IP 68



Opsiyonel malzemeler için lütfen irtibata geçiniz.
Please contact us for optional materials.

Pompa Tipi Pump type	Kad. Sayısı Stages	Motor		Ölçüler / Dimensions (mm)					Ağırlık / Weight (kg)		
		kW	HP	L	LM	LP	ΦM	ΦP	Motor Motor	Pompa Pump	Toplam Total
VSP SS 07095/01	1	5,5	7,5	1249	678	571	142	172	43,5	26	69,5
VSP SS 07095/02	2	11	15	1550	851	699	142	172	60	30	90
VSP SS 07095/03	3	15	20	1800	973	827	142	172	72	34	106
VSP SS 07095/04	4	22	30	2061/1845	1106/890	955	142/172	172	87/86	38	125/124
VSP SS 07095/05	5	30	40	2330/2063/2139	1247/980/1056	1083	142/172/192	172	103/103/129	42	145/145/171
VSP SS 07095/06	6	37	50	2558/2271/2327	1347/1060/1116	1211	142/172/192	172	110/113/138	46	156/159/184
VSP SS 07095/07	7	37	50	2686/2399/2455	1347/1060/1116	1339	142/172/192	172	110/113/138	50	160/163/188
VSP SS 07095/08	8	45	60	2606/2668	1139/1201	1467	172/192	172	127/152	54	181/206
VSP SS 07095/09	9	45	60	2734/2796	1139/1201	1595	172/192	172	127/152	58	185/210
VSP SS 07095/10	10	55	75	2973/3009	1250/1286	1723	172/192	172	138/170	62	200/232
VSP SS 07095/11	11	60	80	3192	1341	1851	192	172	185	66	251
VSP SS 07095/12	12	67	90	3345	1366	1979	192	172	186	70	256
VSP SS 07095/13	13	75	100	3498	1391	2107	192	172	195	74	269
VSP SS 07095/14	14	75	100	3626	1391	2235	192	172	195	78	273
VSP SS 07095/15	15	81	110	3834/3733	1471/1370	2363	192/231	172	210/256	82	292/338
VSP SS 07095/16	16	92	125	4027/3921	1536/1430	2491	192/231	172	212/284	86	298/370
VSP SS 07095/17	17	92	125	4155/4049	1536/1430	2619	192/231	172	212/284	90	302/374
VSP SS 07095/18	18	110	150	4257	1510	2747	231	172	311	94	405
VSP SS 07095/19	19	110	150	4385	1510	2875	231	172	311	98	409
VSP SS 07095/20	20	110	150	4513	1510	3003	231	172	311	102	413

Pompa Tipi Pump type	Kad. Sayısı Stages	Motor		Akım Current (A)	m ³ /h l/s	0	20	40	60	70	80	90	100	110
		kW	HP			0	5,6	11,1	16,7	19,4	22,2	25	27,8	30,6
VSP SS 07095/01	1	5,5	7,5	13,3	Basma Yüksekliği / Head (m)	25	24	21	19	18	17	16	15	13
VSP SS 07095/02	2	11	15	23,7		50	47	42	37	35	34	32	29	25
VSP SS 07095/03	3	15	20	33,1		75	71	63	56	53	51	48	44	38
VSP SS 07095/04	4	22	30	48,5		100	95	84	75	71	67	64	58	51
VSP SS 07095/05	5	30	40	61,7		125	119	105	93	89	84	79	73	63
VSP SS 07095/06	6	37	50	74,3		150	142	126	112	106	101	95	88	76
VSP SS 07095/07	7	37	50	74,3		175	166	148	131	124	118	111	102	89
VSP SS 07095/08	8	45	60	90,4		200	190	169	149	142	135	127	117	101
VSP SS 07095/09	9	45	60	90,4		225	214	190	168	159	152	143	131	114
VSP SS 07095/10	10	55	75	110,5		250	237	211	187	177	168	159	146	127
VSP SS 07095/11	11	60	80	119,1		275	261	232	205	195	185	175	161	139
VSP SS 07095/12	12	67	90	134,6		300	285	253	224	213	202	191	175	152
VSP SS 07095/13	13	75	100	150,7		325	309	274	243	230	219	206	190	165
VSP SS 07095/14	14	75	100	150,7		350	332	295	261	248	236	222	204	177
VSP SS 07095/15	15	81	110	159		375	356	316	280	266	253	238	219	190
VSP SS 07095/16	16	92	125	179		400	380	337	299	283	269	254	234	203
VSP SS 07095/17	17	92	125	179		425	404	358	317	301	286	270	248	215
VSP SS 07095/18	18	110	150	216		450	427	379	336	319	303	286	263	228
VSP SS 07095/19	19	110	150	216		475	451	401	355	337	320	302	277	241
VSP SS 07095/20	20	110	150	216		500	475	422	373	354	337	318	292	253



Firmamız teknolojik gelişmeler nedeniyle değişiklik hakkını saklı tutar.

Due to continuous improvement in design we reserve the right to amend specifications or data without prior notice.

(1 - 20 KADEME) VSP SS 07095

Çark kanat sayısı / No. of vanes
7

Çıkış haznesi bağlantısı / Outlet connection diameter
5" (içten pasolu) / 5" (inside threaded)

Pompa dış çapı / Pump outside diameter
172 mm

Dönüş Yönü / Rotation
Saatin tersi yönünde / CCW

Devir / Revolution
2900 rpm

Mil çapı / Shaft diameter
25,4 mm

Pompa performans eğrileri 1 bar atmosfer basıncı altında 15°C sıcaklığındaki, özgül yoğunluğu 1 gr/cm³ olan su ile elde edilmiştir.
The hydraulic working characteristics have been taken with water at 15°C, at the atmospheric pressure of 1 bar and specific gravity is 1 gr/cm³

